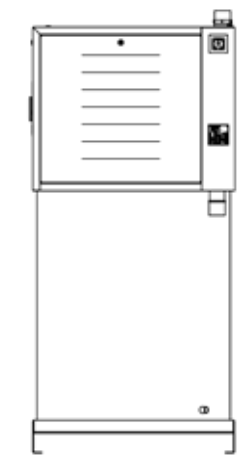
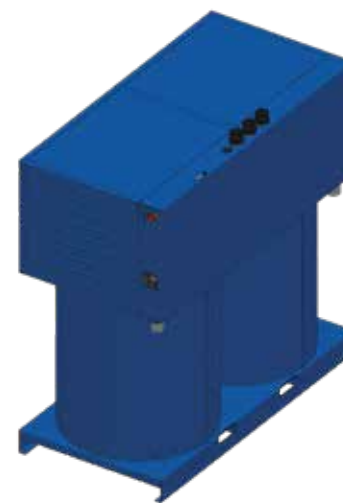
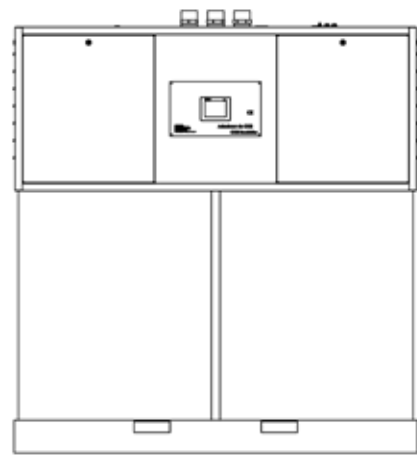


CARBON DIOXIDE ABSORBER

ABSORBER 1000D/8000D

DOUBLE COLUMN



W

H

D

H

DOUBLE COLUMN CARBON DIOXIDE ABSORBER: TECHNICAL SPECIFICATIONS

MODEL	DIMENSIONS			WEIGHT (Kg)	POWER 50Hz (kW)	ABSORBED POWER (kW)	CAPACITY (Tons of Golden apple) 1°C / 2%O2 / 1%CO2	CONNECTIONS	
	D (mm)	W (mm)	H (mm)					ELECTRIC	AIR
1000 D	1300	670	1790	300	1,52	1,22	500	400VAC/ 3/ 50Hz /3.0Kw	Tube: Ø6/8
1500 D	1500	670	1790	550	1,52	1,22	750		
2500 D	1600	770	1900	680	3,20	2,56	1250		
3000 D	1700	870	1900	750	4,40	3,52	1500	400VAC/3/50 Hz 440/3/60Hz *other on request	Pression Mini: 6 bar Maxi: 8 bar
4000 D	2000	1030	1900	950	4,40	3,52	2000		
5000 D	2010	1030	2100	1200	6,00	4,80	2500		
6000 D	2010	1030	2100	1400	6,00	4,80	3000		
7000 D	2020	1130	2430	1500	8,00	6,40	3500		
8000 D	2020	1130	2430	1600	8,00	6,40	4000		